

CONTENTS

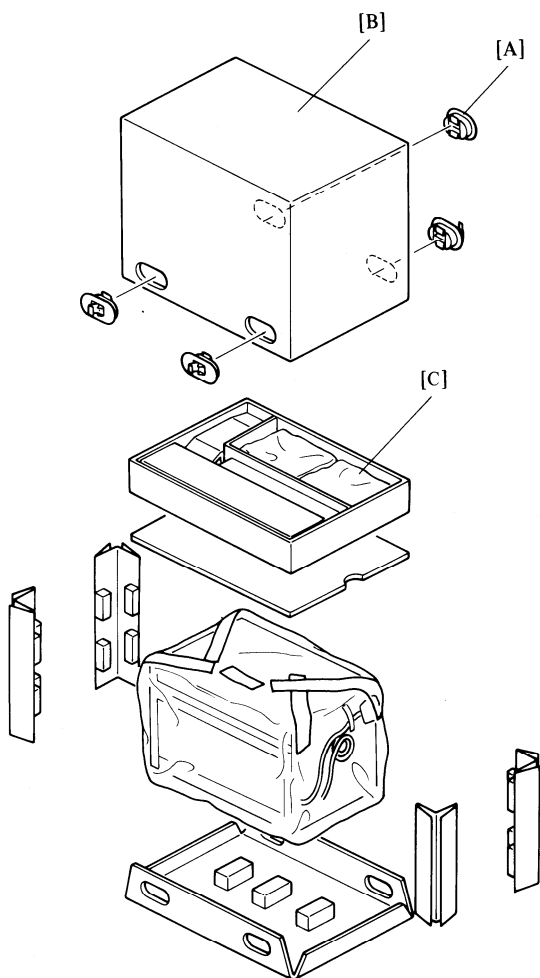
UNPACKING	7-1
-----------------	-----

INSTALLATION

1. Accessory Check	7-2
2. Installation Procedure	7-3

REPLACEMENT AND ADJUSTMENT

1. Paper Feed Unit Removal	7-7
2. Pick-up Roller Replacement	7-8
3. Feed Roller Replacement	7-9
4. Friction Roller Replacement	7-10
5. Paper Tray Unit Removal	7-11
6. Paper Tray Drive Wire Replacement	7-12

UNPACKING

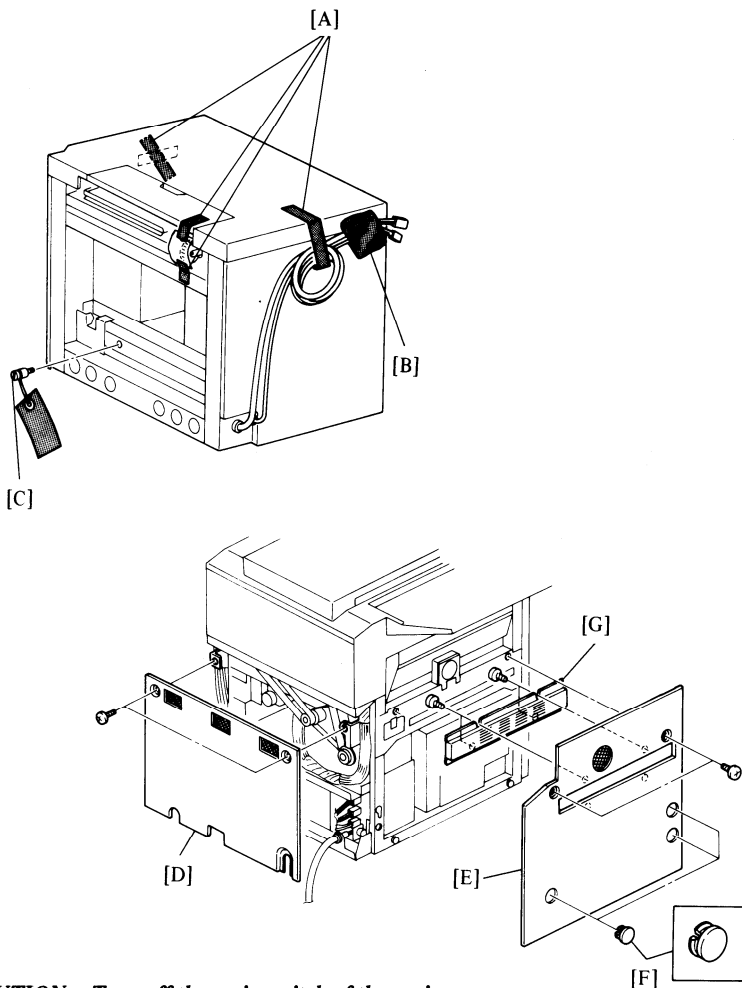
1. Remove the four box joiners [A].
2. Remove the top carton [B].
3. Remove the accessories [C].
4. Remove the machine from the vinyl bag and bottom carton.

INSTALLATION**1. Accessory Check**

Check the quantity and condition of the accessories in the box according to the New Equipment Condition Report (N.E.C.R) or the following list:
(Remove all packing material.)

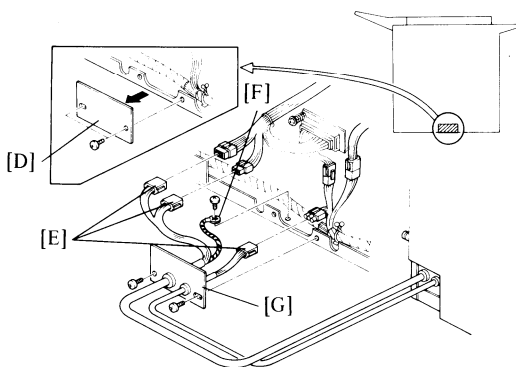
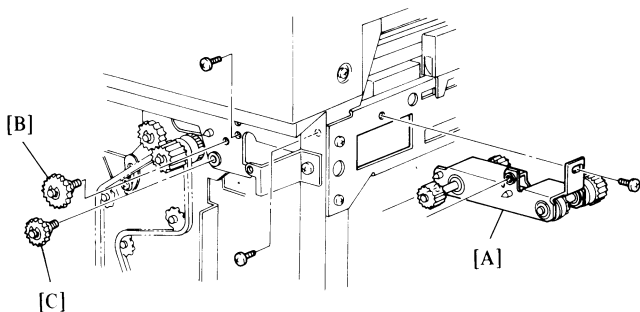
DESCRIPTION	Q'TY
1. Paper Conveyor Unit	1
2. Paper Entrance Guide	1
3. Screw M4 x 6mm	4
4. Paper Conveyor Drive Unit	1
5. Screw w/washer M4 x 6mm	3
6. Idle Gear 31T	1
7. Idle Gear 36T	1
8. Cushion	1
9. Leveling Shoe	2
10. Fixing Bracket	1
11. Screw M5 x 8mm	2
12. Ground Screw	1
13. Docking Stud	1
14. Misfeed Removal Decal	1
15. Operating Instructions	1
16. Installation Procedure	1
17. N.E.C.R.	1
18. Envelope for N.E.C.R. (U.S.A.)	1
19. Multiple Language Decals (Europe)	1

2. Installation Procedure

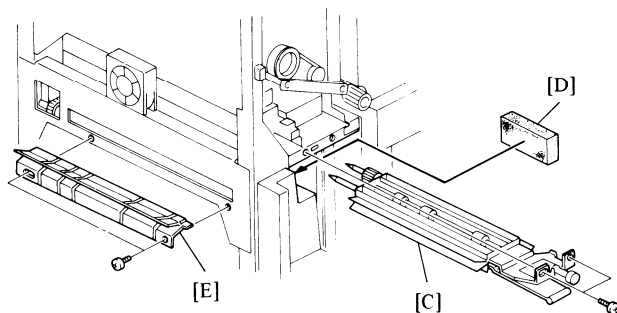
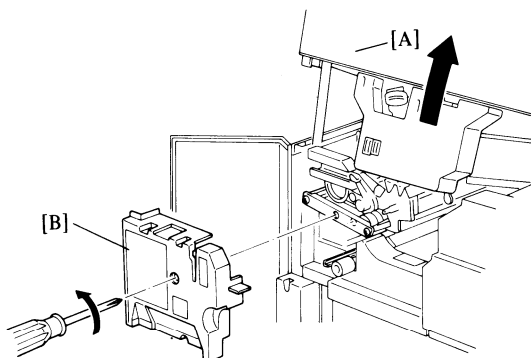


CAUTION: Turn off the main switch of the copier.

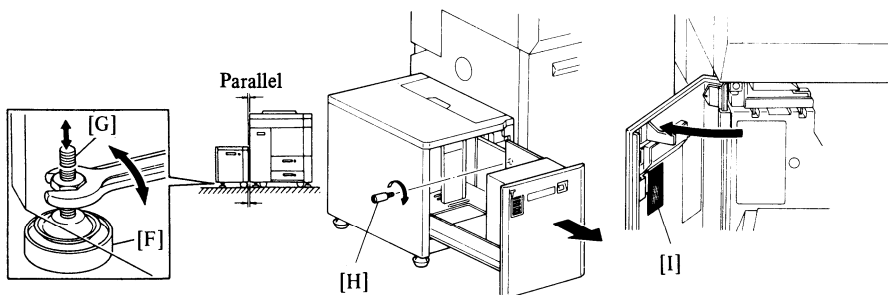
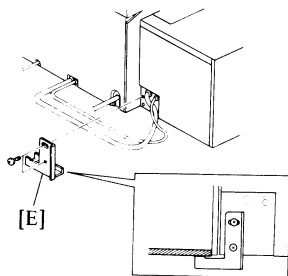
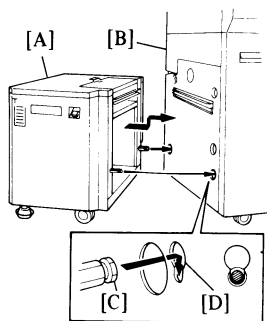
1. Remove the four strips of tape [A] and remove the bubble wrap [B] from the harness bracket.
2. Remove the stud [C] securing the paper tray.
3. Remove the lower rear cover [D] (2 screws) and the lower left cover [E] (2 screws) from the copier.
4. Remove the 3 plastic caps [F] and the paper entrance cover [G] (4 screws) from the lower left cover.



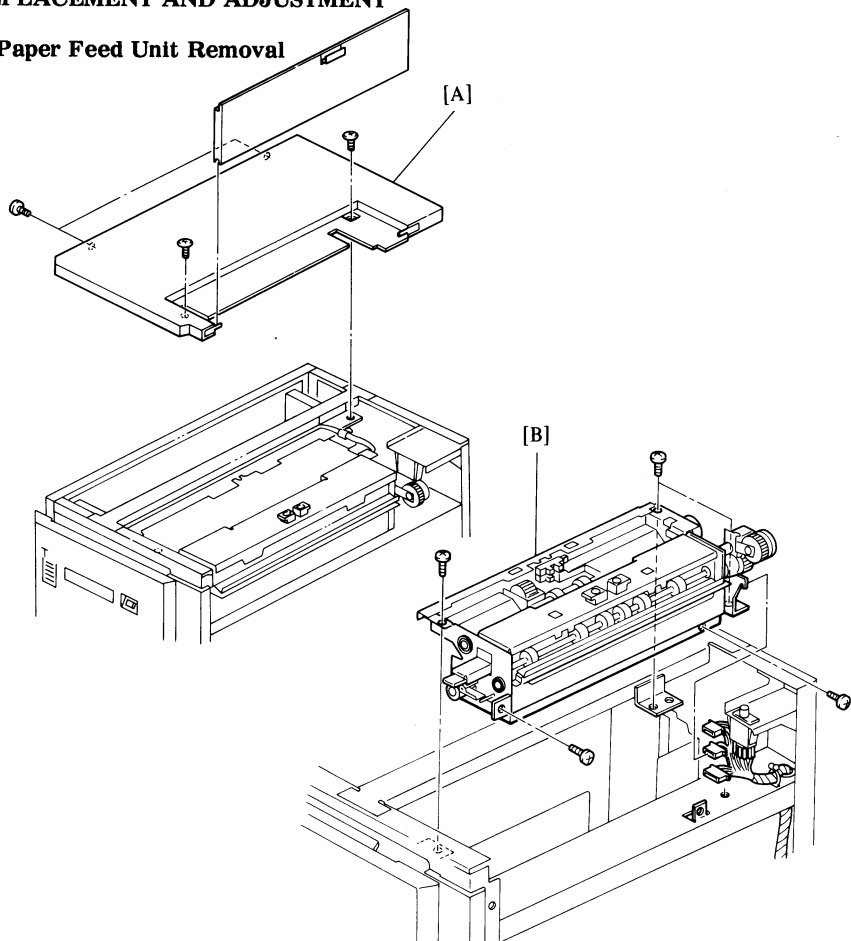
5. Position the paper conveyor drive unit [A] (2 positioning pins), and secure it (3 screws: M4 w/washer x 6mm).
6. Install the two gears: 36T [B] and 31T [C].
7. Remove the cover plate [D] (2 screws).
8. Couple the 3 connectors [E] of the option tray cables with those of the copier harness; 6P, 12P, and 15P. Secure the ground wire [F] (1 ground screw).
9. Install the harness bracket [G] (2 screws).



10. Open the top unit [A], and remove the development unit cover [B] (1 screw).
11. Position the paper conveyor unit [C] (2 positioning pins and 1 hook), and secure it (2 screws: M4 x 6mm).
12. Reinstall the development unit cover.
13. Stick the cushion [D] on the front top of the power supply unit shielding box.
14. Install the paper entrance guide [E] (2 screws: M4 x 6mm).
15. Confirm that the paper conveyor unit opens and closes smoothly. Close the top unit.
16. Reinstall the lower rear cover and the lower left cover.

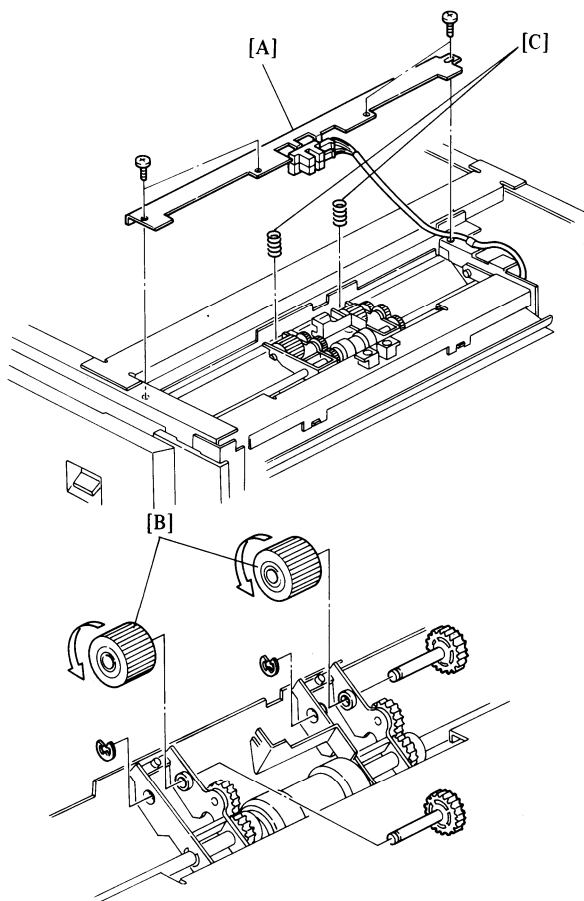


17. When docking the option tray [A] with the copier [B], make sure that the docking pins [C] are firmly seated in the notches [D] of the copier.
18. Install the interlock plate [E] (2 screws: M5 x 8mm).
19. Place the leveling shoes [F] under the option tray leveling feet [G], and screw down the feet to level the option tray.
20. Pull the paper tray out halfway and install the docking stud [H].
21. Open the left front door of the copier and stick on the misfeed removal decal [I].
22. Check the option tray operation.
23. Complete the N.E.C.R.

REPLACEMENT AND ADJUSTMENT**1. Paper Feed Unit Removal**

1. Undock the option tray from the copier.
2. Remove the upper cover [A] (4 screws).
3. Remove the paper feed unit [B] (5 screws).

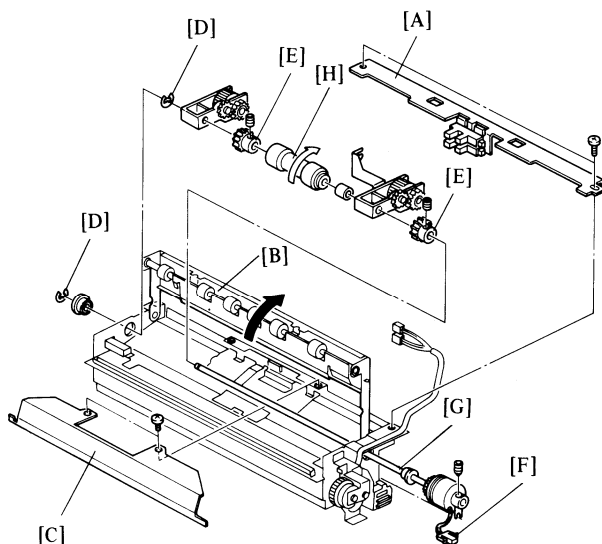
2. Pick-up Roller Replacement



1. Remove the upper cover (4 screws).
2. Remove the lift and overrun sensor mounting bracket [A] (4 screws).
3. Lift the pick-up roller assembly and remove the pick-up rollers [B] (1 E-ring each).
4. Install new pick-up rollers. The pick-up roller has a one-way bearing. When replacing the pick-up roller, make sure that it can rotate freely in the direction of the arrow as shown.
5. Reassemble.

NOTE: Check that the pressure springs [C] are properly positioned in the tray lift sensor mounting bracket.

3. Feed Roller Replacement

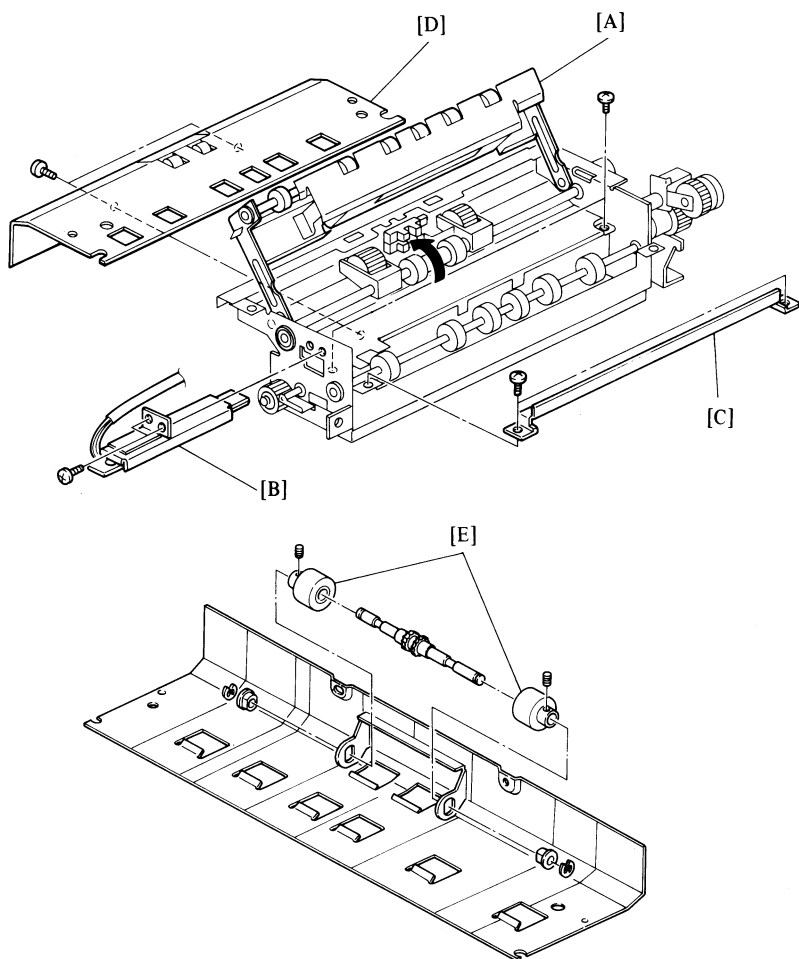


1. Remove the paper feed unit. (Refer to "Paper Feed Unit Removal.")
2. Remove the tray lift and overrun sensors mounting bracket [A] (4 screws).
3. Open the upper relay roller unit [B] and remove the upper plate [C].
4. Remove the two E-rings [D] from the feed shaft.
5. Loosen the two Allen screws on the feed shaft gears [E] and remove the paper feed clutch male connector [F] from the bracket.
6. Slide out the feed shaft [G] and remove the old feed roller [H].
7. After Installing the new feed roller, make sure that it can rotate freely in the direction of the arrow as shown.

CAUTION: When reinstalling the feed shaft, check that the feed clutch stopper is positioned on the arm.

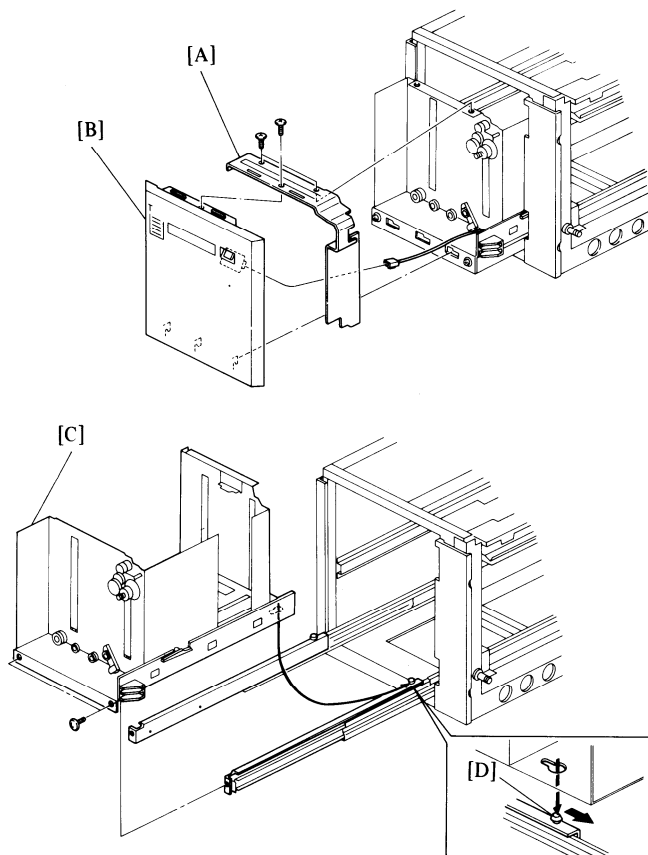
NOTE: Before tightening the Allen screws on the feed shaft gears, check the feed roller thrust play adjustment (A:0.2 - 0.3mm, B:0.1 - 0.2mm).

4. Friction Roller Replacement



1. Remove the paper feed unit. (Refer to “Paper Feed Unit Removal.”)
2. Open the upper relay roller unit [A].
3. Remove the paper feed sensor [B] (2 screws).
4. Remove the exit guide [C] (2 screws).
5. Slide out the lower guide plate [D] (4 screws).
6. Replace the friction rollers [E] (2 E-ring and 2 screws).

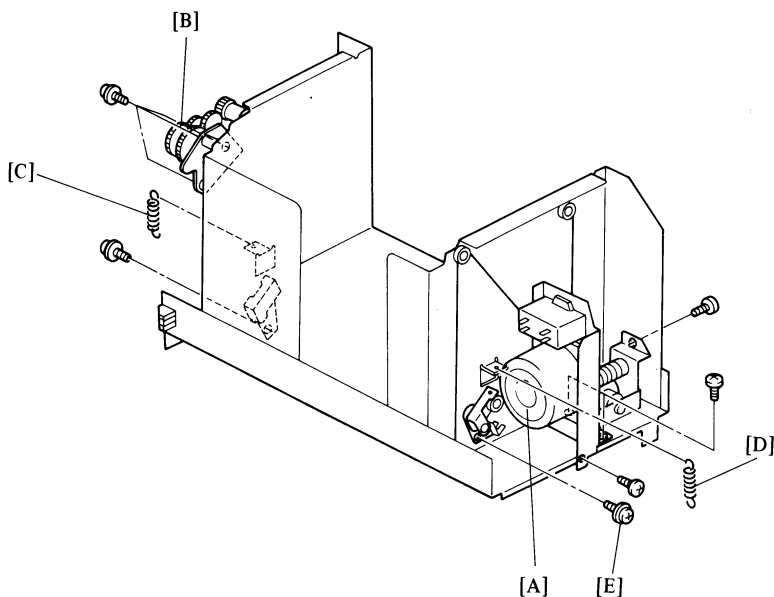
5. Paper Tray Unit Removal



1. Lower the paper tray.
2. Slide out the paper tray unit and remove the paper.
3. Remove the upper cover (4 screws) and the front top cover [A] (3 screws).
4. Slide the front exterior cover [B] to the left and remove it (1 connector).
5. Remove the paper tray unit [C] (2 screws).

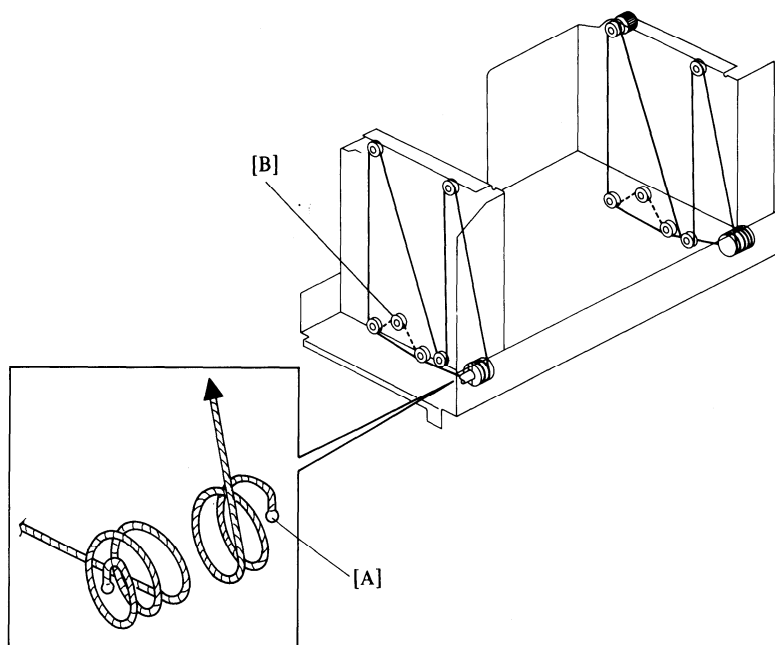
CAUTION: When installing the paper feed unit, position the rear side paper tray unit so that the pin [D] on the guide rail is inserted into the hole.

6. Paper Tray Drive Wire Replacement



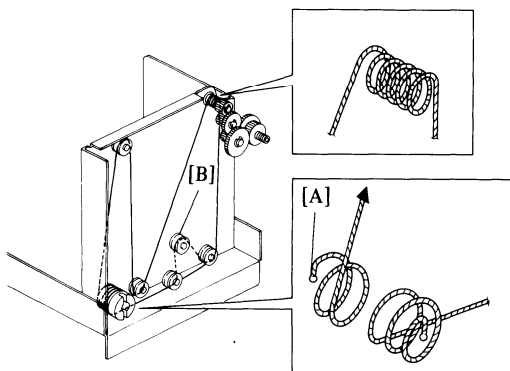
1. Remove the paper tray unit. (Refer to "Paper Tray Removal.")
2. Remove the following parts:
 - a) Tray motor [A] (4 screws and 2 connectors).
 - b) Friction roller drive gear assembly [B] (3 screws).
 - c) Wire tensioning springs [C,D] (Front and rear).
3. Loosen the screw for the wire tension stopper [E] (Front and rear).

Wire End Bead Colors: Front ---- Red
 Rear ----- Blue



4. Rear Wire Replacement

- a. Remove the old wire.
- b. Insert the blue end bead [A] of the new wire into the slot of the drive pulley and wrap the wire twice around the drive pulley (counterclockwise).
- c. String the wire over all the pulleys, except the idle pulley [B], as shown.
- d. Wrap the other end of the wire around the drive pulley 2.5 times counterclockwise and insert the bead into the drive pulley slot as shown.
- e. Insert the support beads into the slots of the lift rods.
- f. Now, string the wire over the idle pulley.



5. Front Wire Replacement

- a. Remove the old wire.
 - b. Insert the red end bead [A] of the new wire into the slot of the drive pulley and wrap the wire twice around the drive pulley (clockwise).
 - c. String the wire over all the pulleys, except the idle pulley [B], wrapping the wire around the friction roller drive pulley 5 times clockwise as shown.
 - d. Wrap the other end of the wire around the drive pulley 2.5 times clockwise and insert the bead into the drive pulley slot.
 - e. Insert the two support beads into the lift rod slots.
 - f. Now, string the wire over the tension pulley.
6. Reinstall the friction roller drive gear assembly and the wire tensioning spring.
 7. Confirm that the wires are not crossed and that the bottom plate can move down by itself after being lifted manually.
 8. Reinstall the tray motor.
 9. Push up the wire tension stopper and tighten it while holding the wire tension (1 screw each, front and rear).
 10. Reassemble the paper tray unit.
 11. Reinstall the paper tray unit (2 screws).
 12. Check the up and down operation of the tray.